



- 185 NON-MAJOR PORTS, ONLY 61 ARE FUNCTIONAL
- ONE MAJOR PORT VISAKHAPATNAM AND 14 NOTIFIED NON-MAJOR PORTS ALONG ITS 996KM COAST LINE
- BHAVANAPADU, MEGHAVARAM, KALINGAPATNAM, BHEEMUNIPATNAM, GANGAVARAM, NAKKAPALLI, KAKINADA SEZ, KAKINADA, S.YANAM, NARSAPUR, MACHILIPATNAM, NIZAMPATNAM, VADAREVU AND KRISHNAPATNAM
- NON-FUNCTIONAL NON-MAJOR PORTS IN ANDHRA PRADESH ARE 4



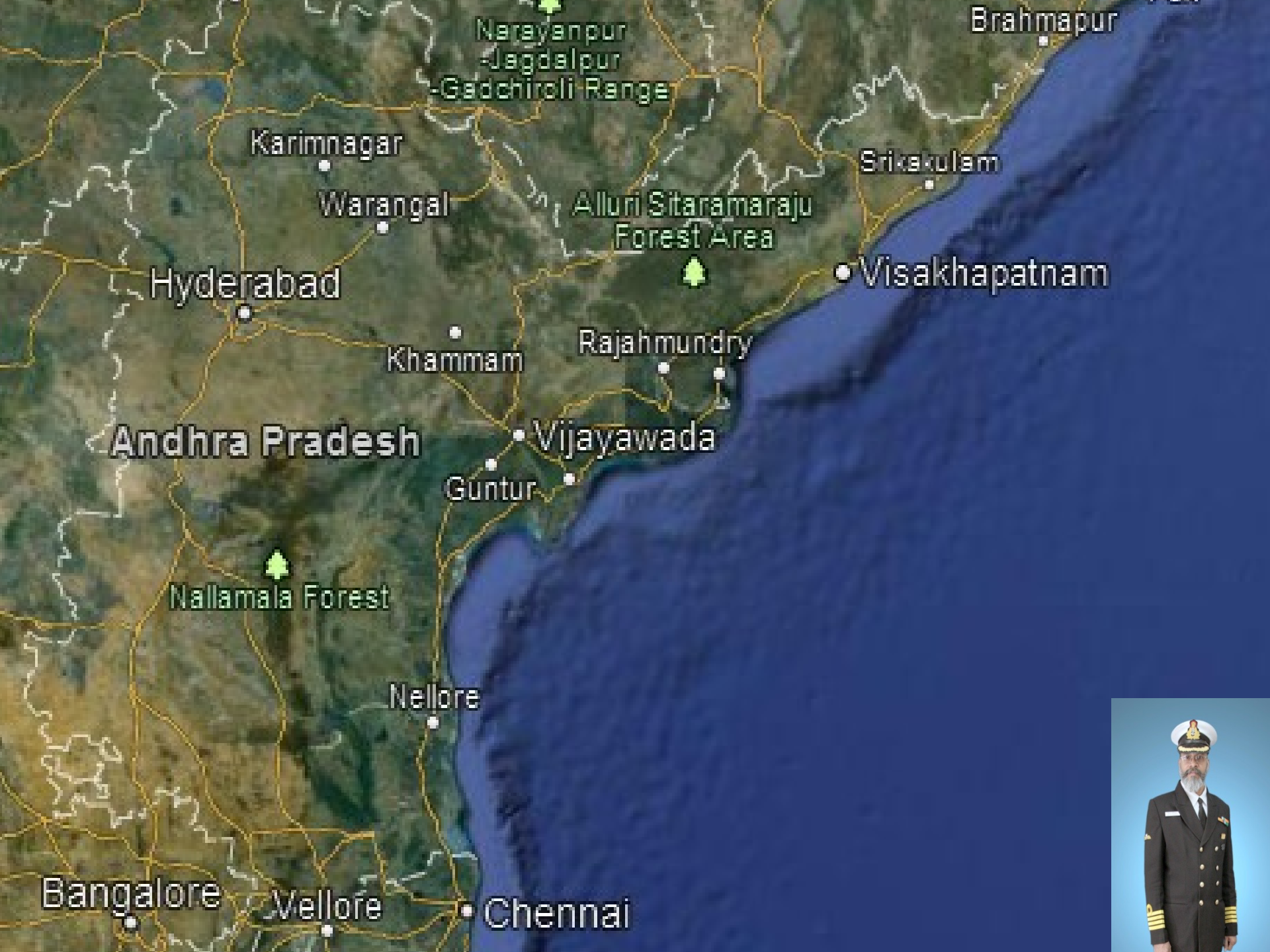


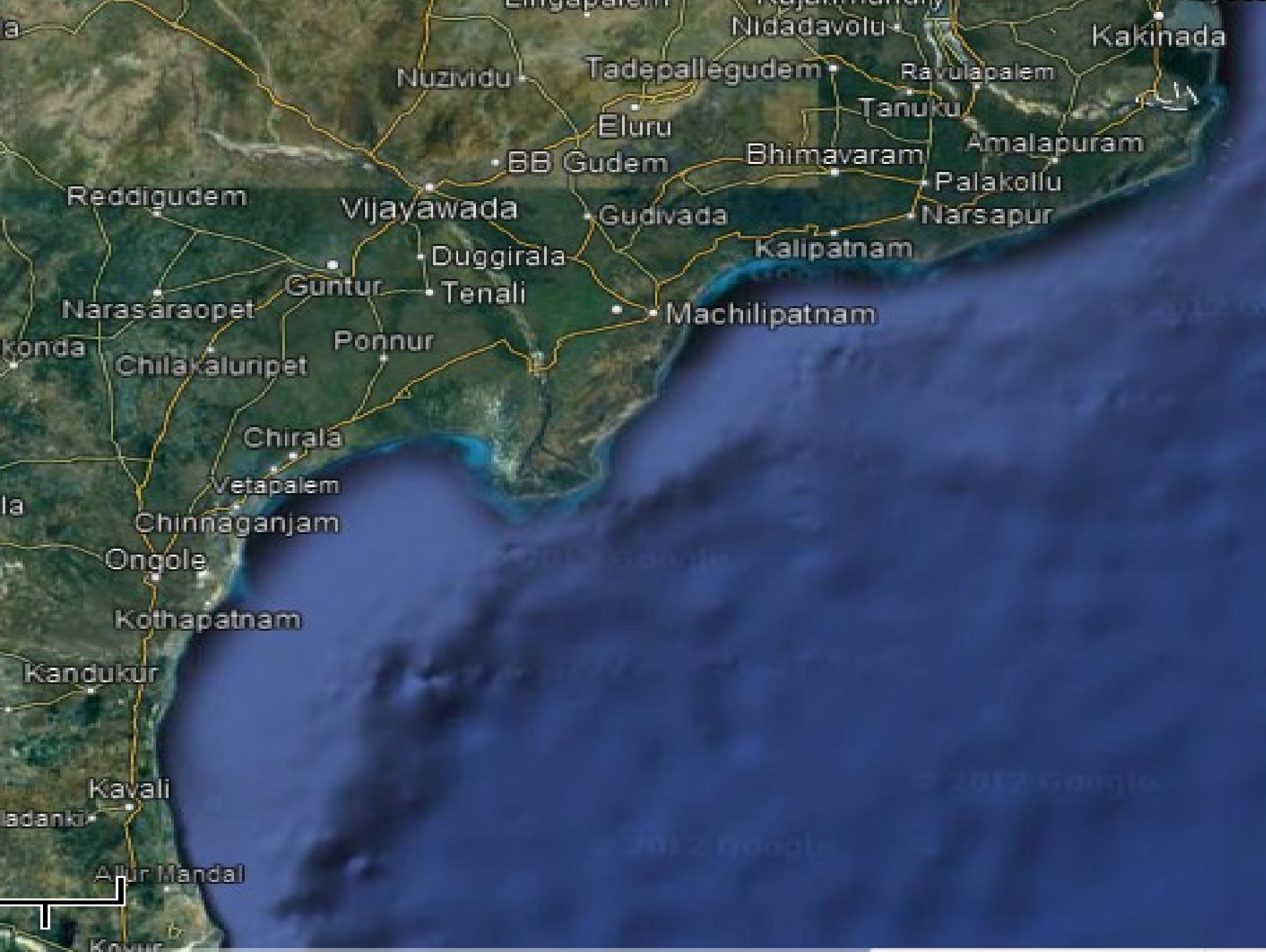


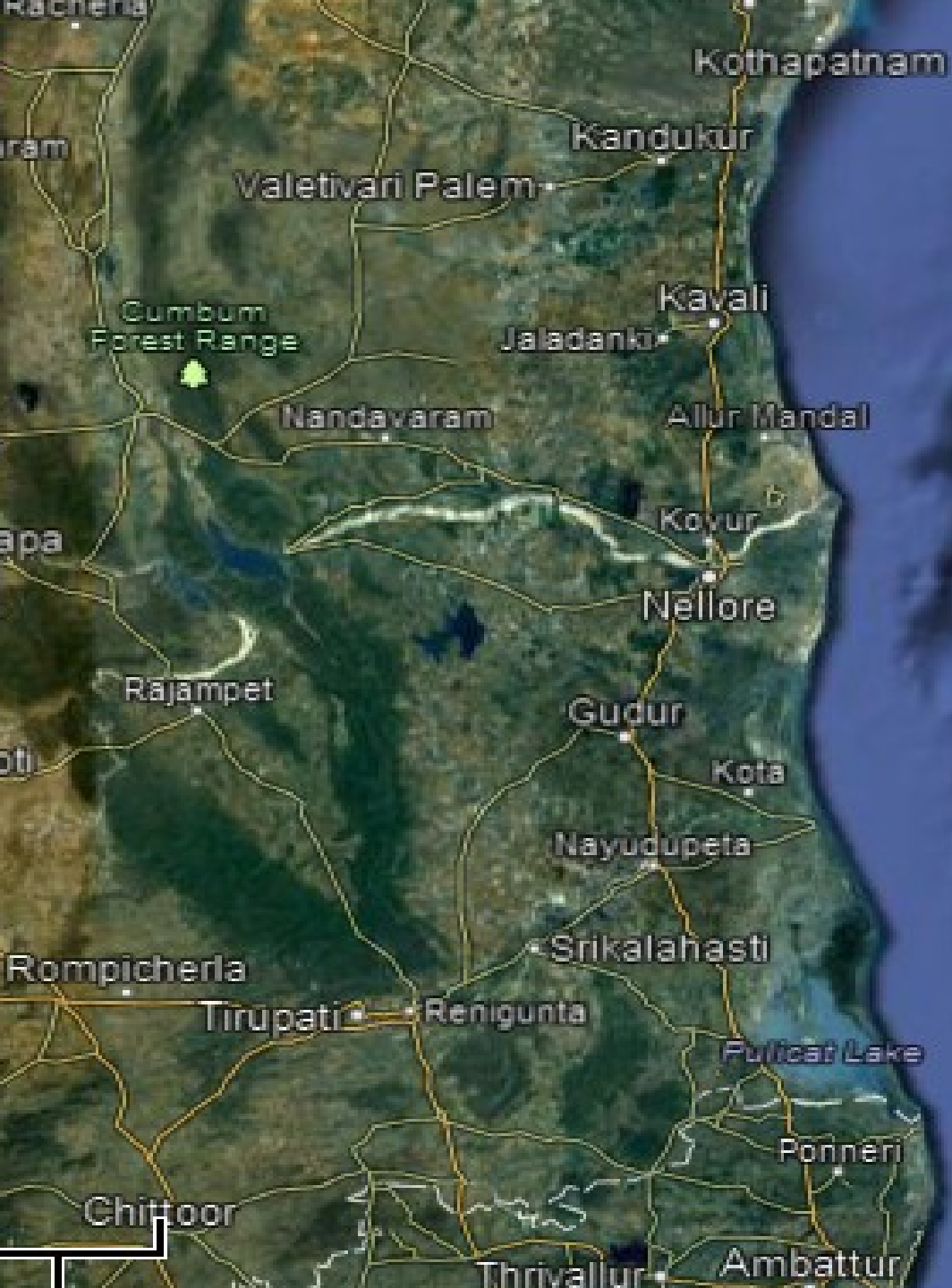


- 185 NON-MAJOR PORTS, ONLY 61 ARE FUNCTIONAL
- ONE MAJOR PORT VISAKKHAPATNAM AND 14 NOTIFIED NON-MAJOR PORTS ALONG ITS 996KM COAST LINE
- BHAVANAPADU, MEGHAVARAM, KALINGAPATNAM, BHEEMUNIPATNAM, GANGAVARAM, NAKKAPALLI, KAKINADA SEZ, KAKINADA, S.YANAM, NARSAPUR, MACHILIPATNAM, NIZAMPATNAM, VADAREVU AND KRISHNAPATNAM
- NON-FUNCTIONAL NON-MAJOR PORTS IN

- RAILWAY NETWORK OF 5,107 MTS, 620 STATIONS AND HANDLING CAPACITY OF MORE THAN 100 MTS ANNUALLY
- ROAD NETWORK OF 194,523 KM INCLUDING 4,104 KM OF NATIONAL HIGHWAYS



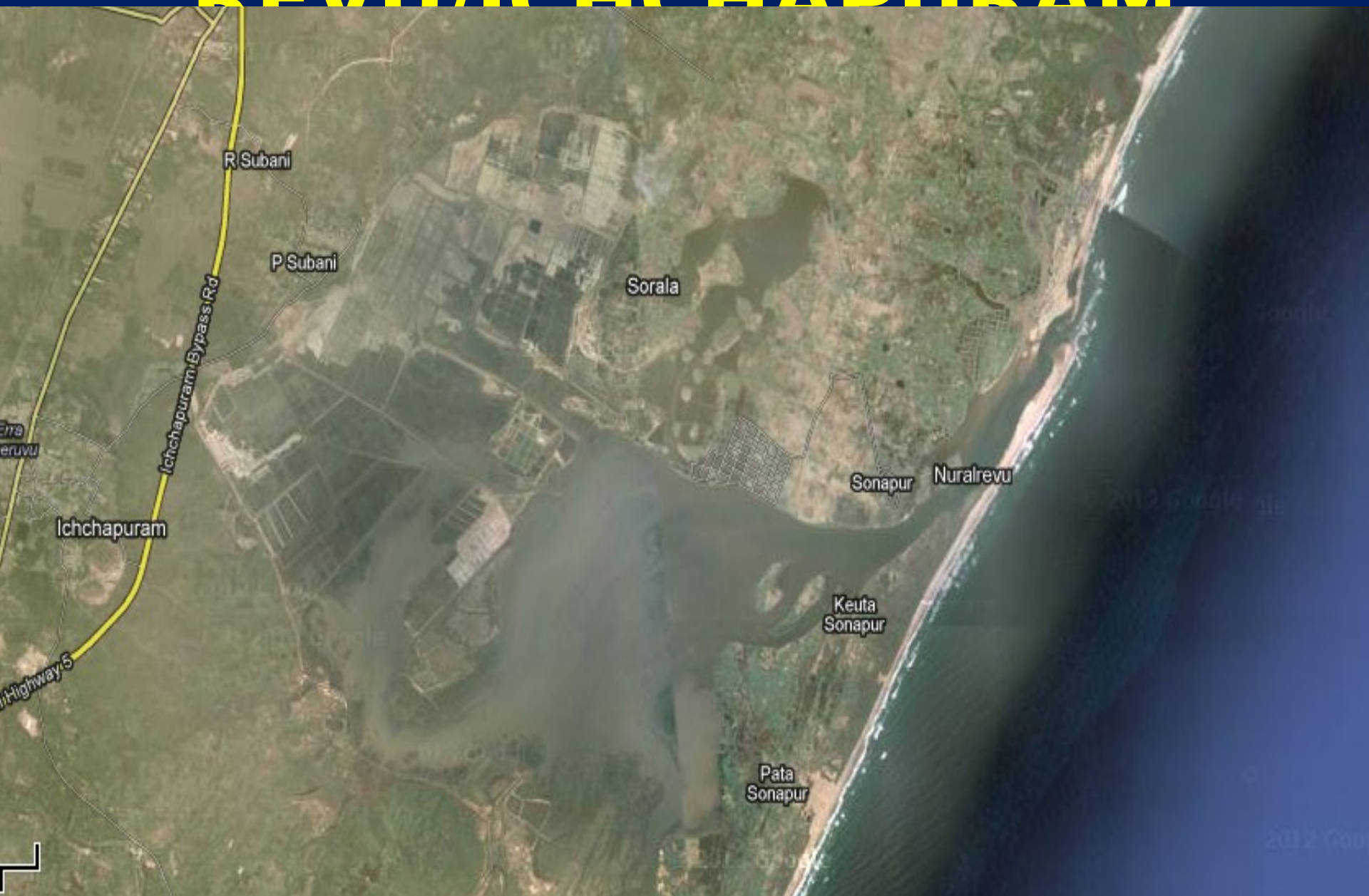




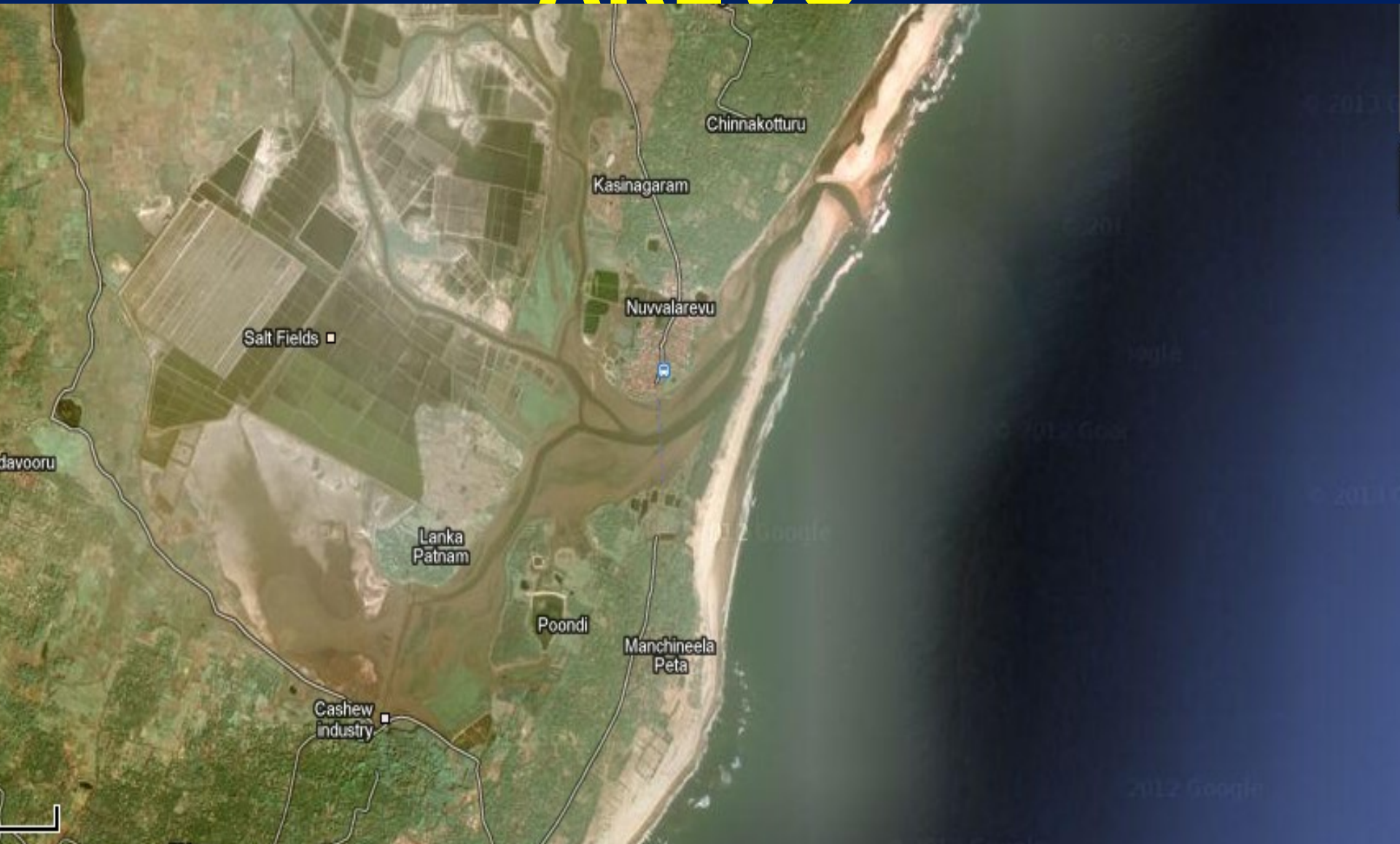


NURELA

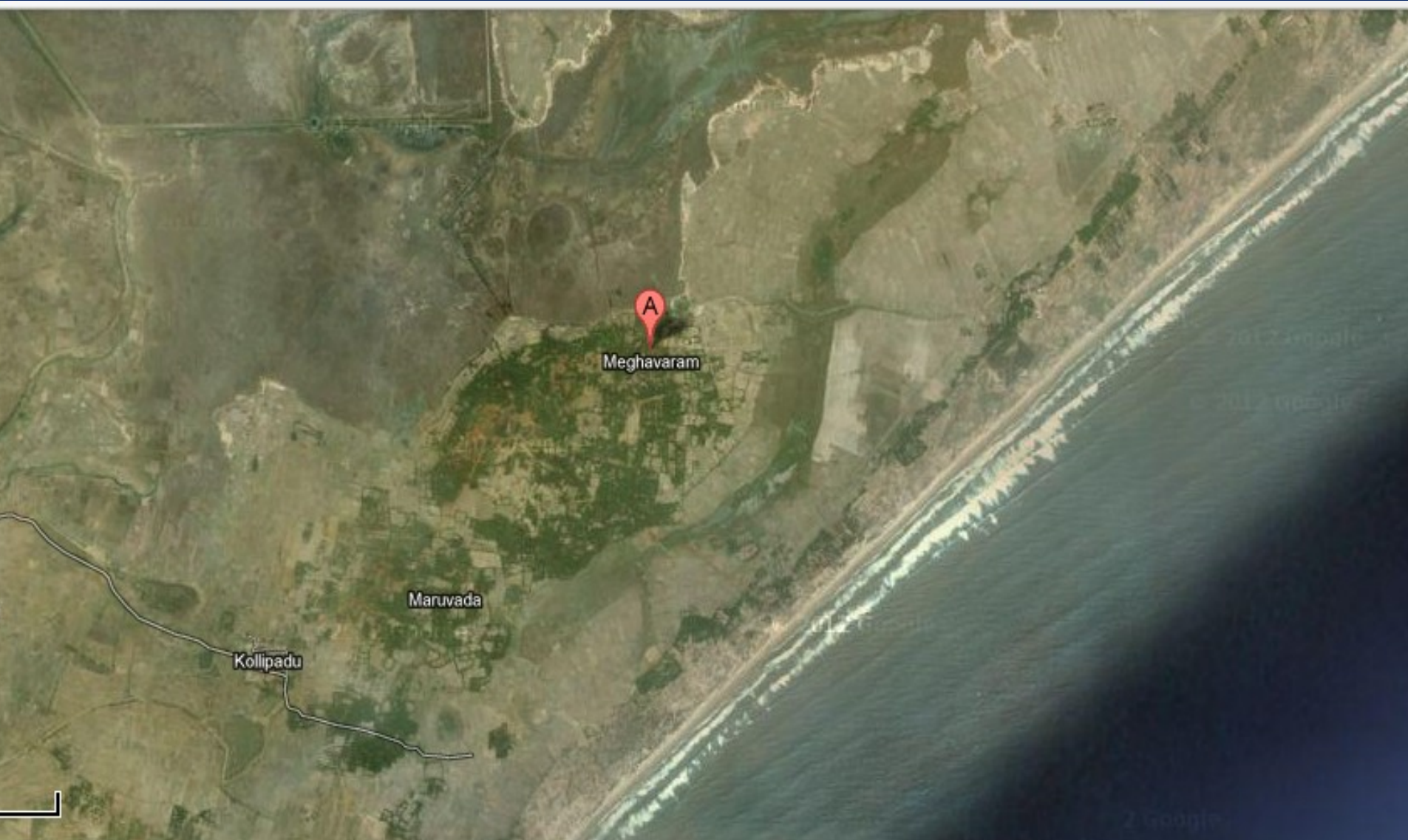
REVU/ICHCHAPURAM



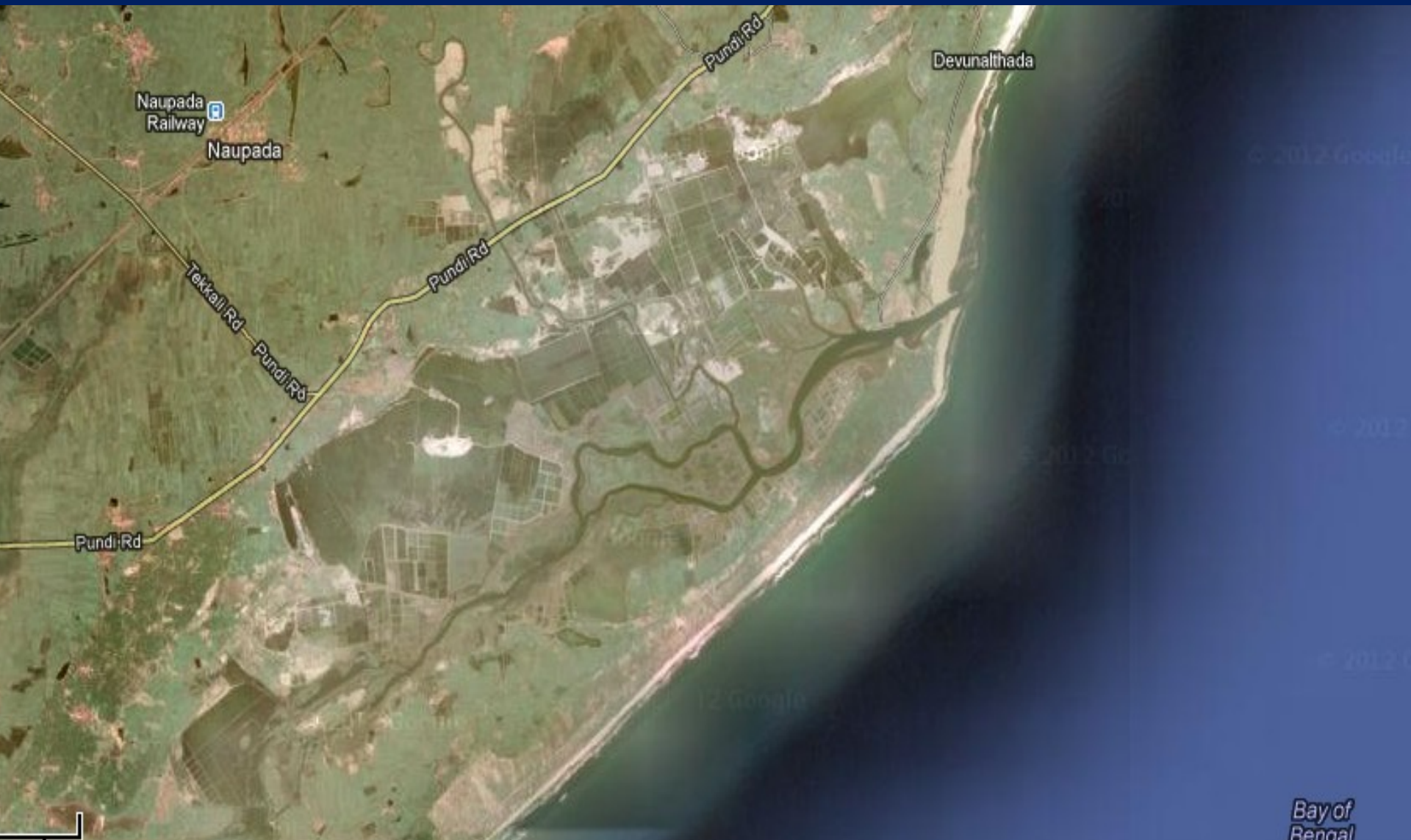
BHAVANAPADU/NUVVVAL AREVU



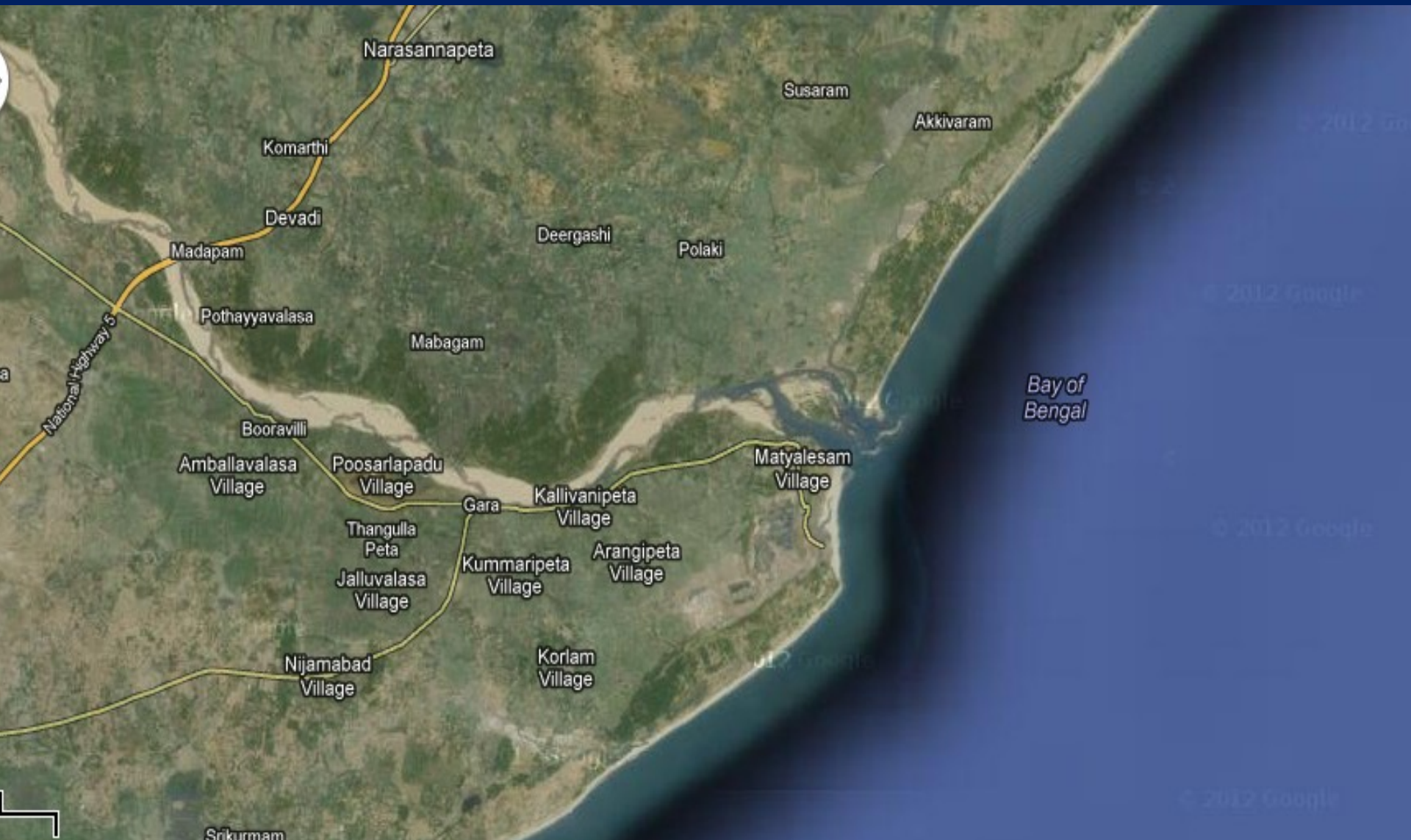
MEGHAVARAM



NAUPADA



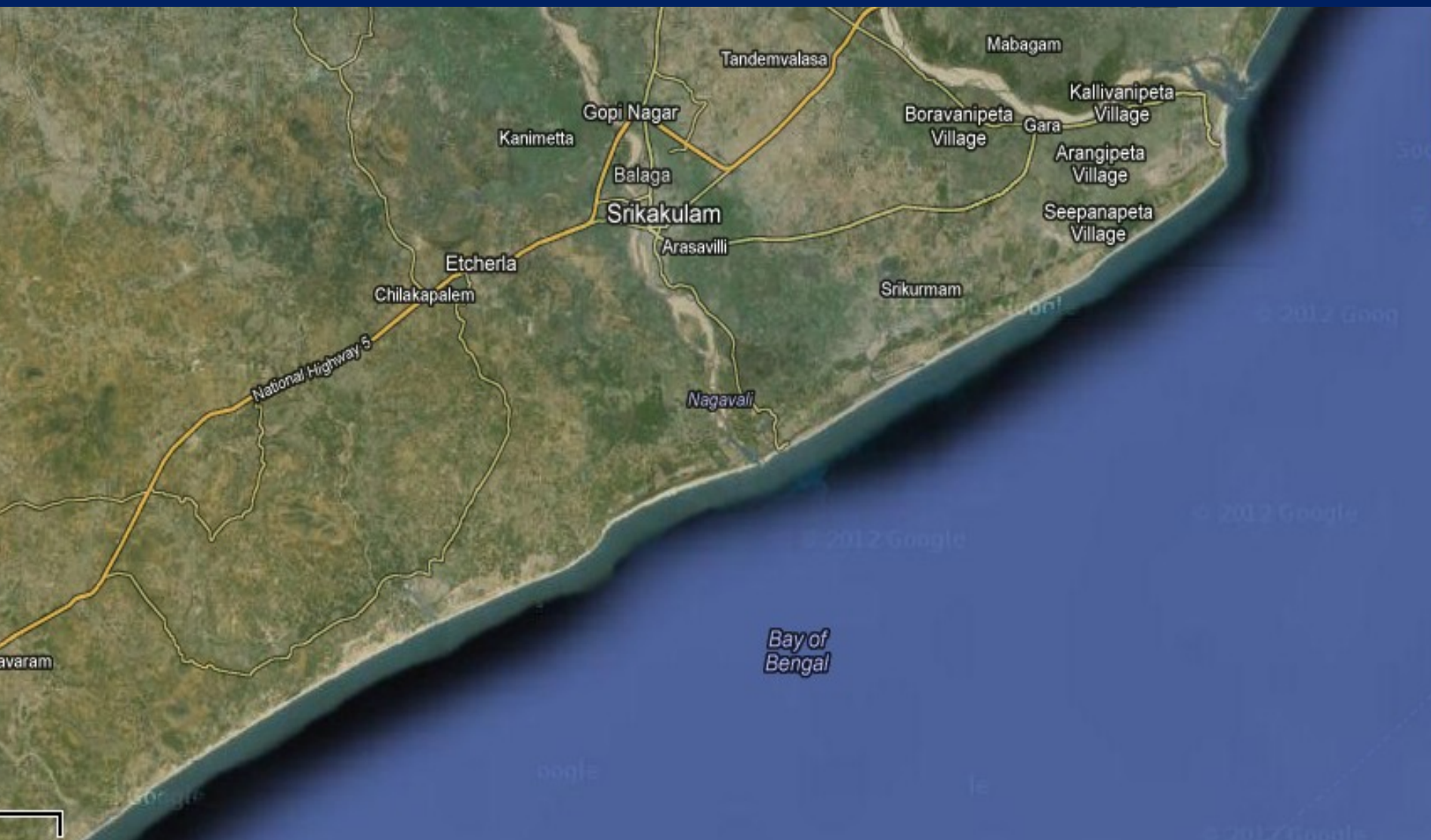
KALINGAPATNAM



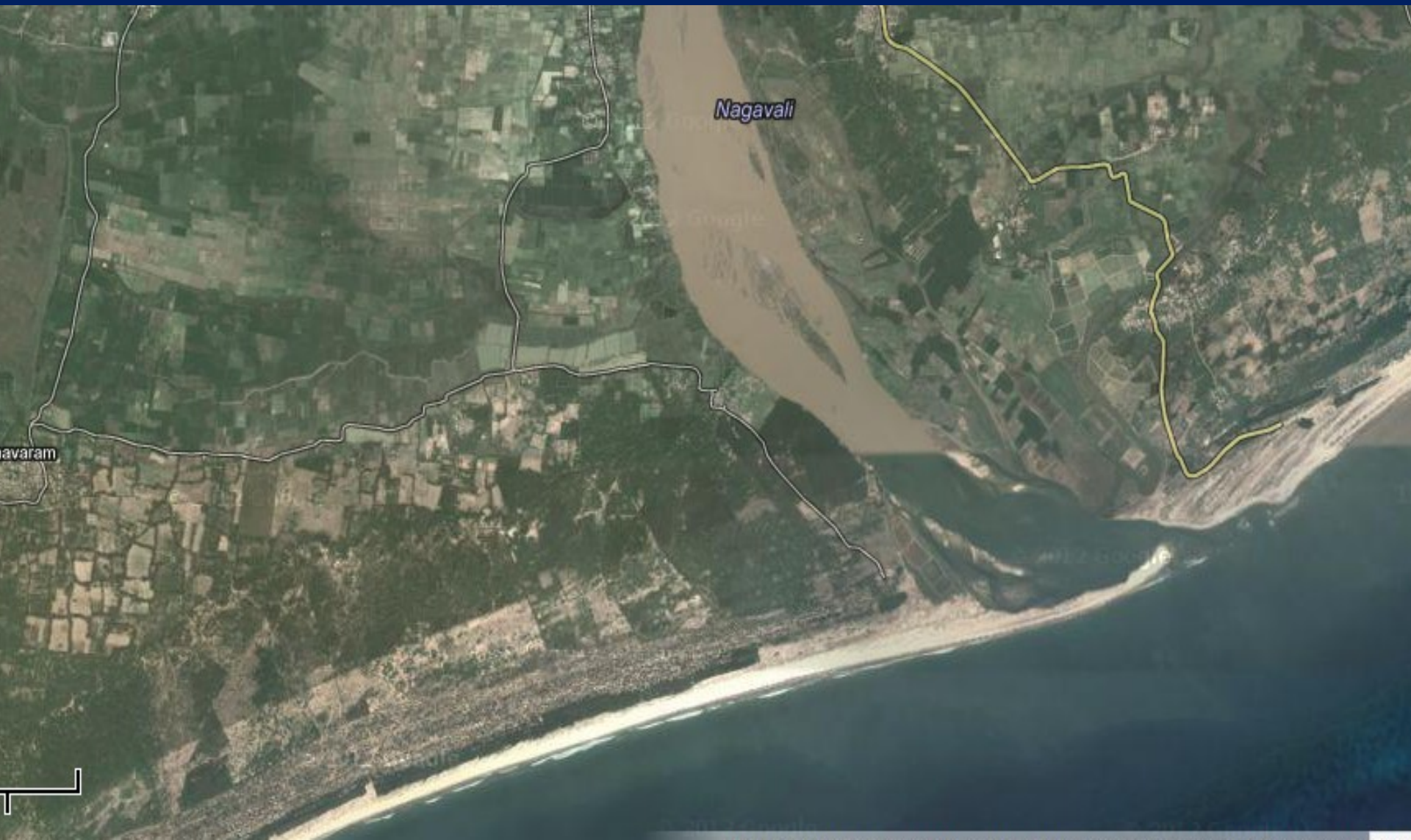
KALINGAPATNAM



SRIKAKULAM



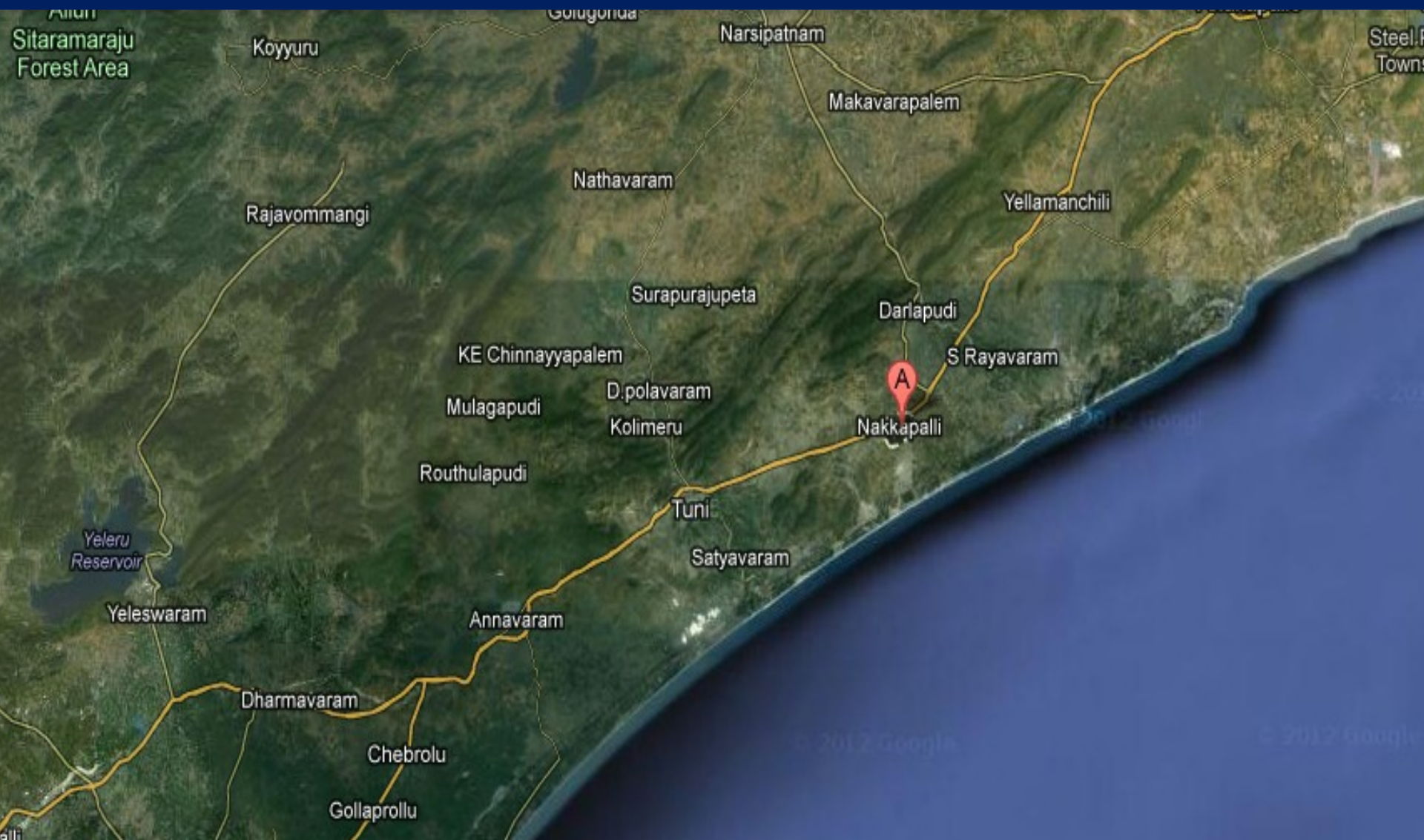
NAGAVALI



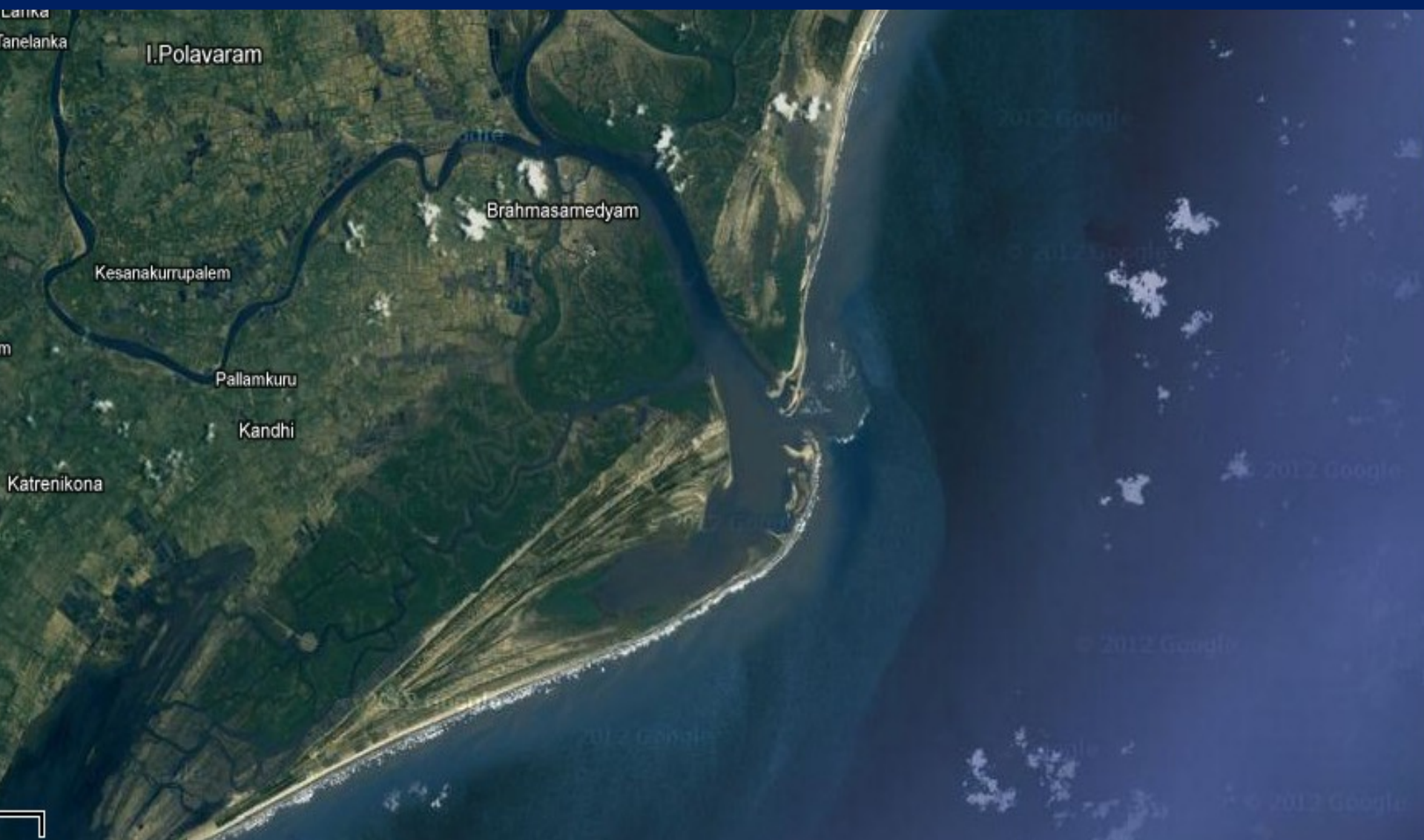
GANGAVARAM



NAKKAPALLI



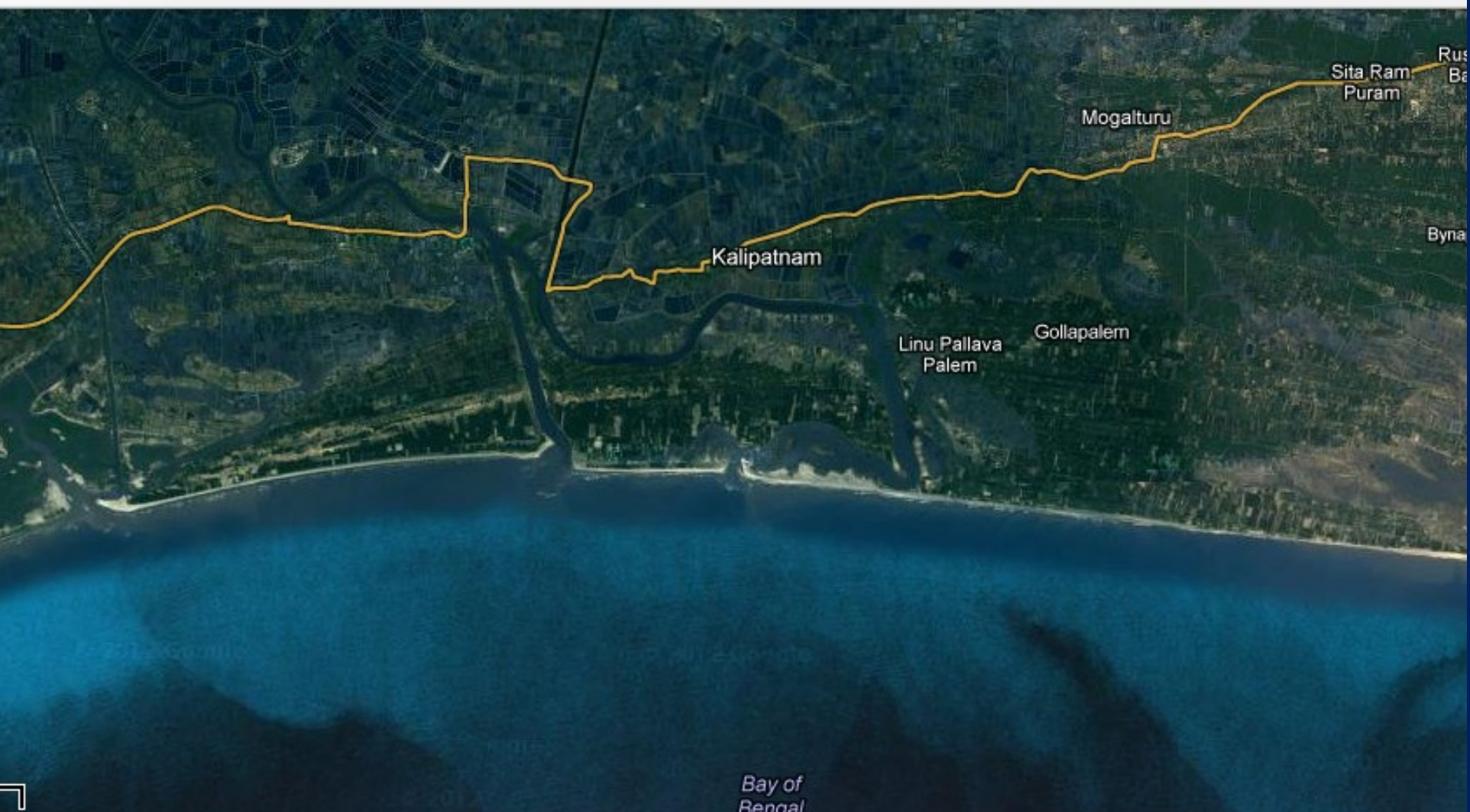
POLAVARAM



RAVVA/ANTARVEDI



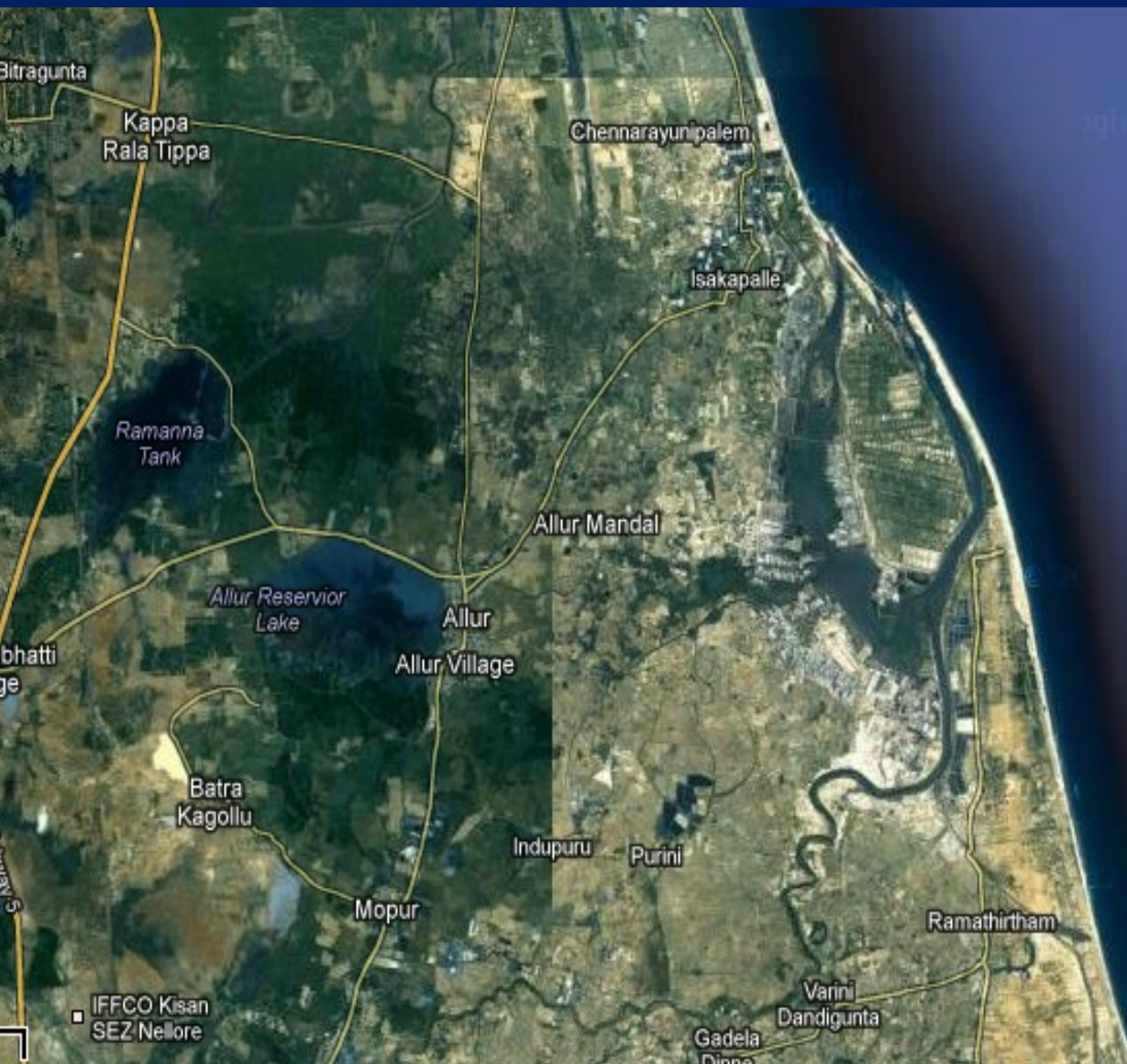
KALIPATNAM



KALIPATNAM



ALLUR



ALLUR SALT PANS



ALLUR SALT PANS



KRISHNAPATNAM

