



Interior design accomodation for
95000 dwt tanker vessel

2/22/13















2/22/13



2/22/13



Accomodation Design For Atco Tugs.

2/22/13



2/22/15





2/22/13





2/22/15

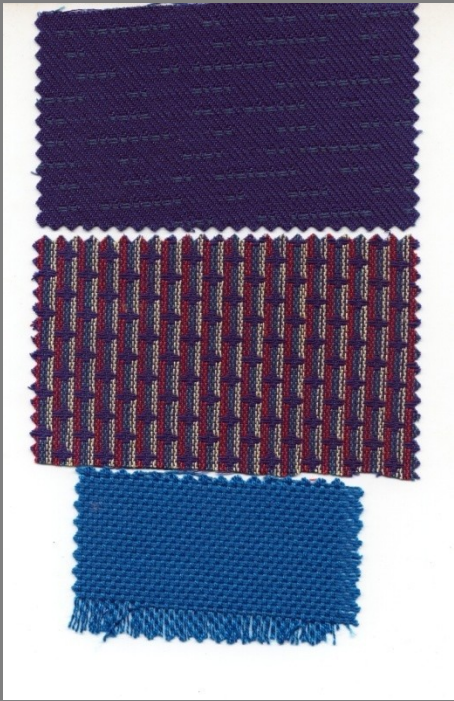
AHTS - INTERIOR COLOUR SCHEME

ROOM NAME			
RECREATION ROOM			
ITEM & COLOUR	SAMPLE	SAMPLE	ITEM& COLOUR
CEILING PANEL.	1058 STACO		WALL PANEL F 25K STACO
DOOR BLADE			WINDOW CURTAIN
DOOR FRAME & VENTILATOR			VINYL FLOOR VFM601
FURNITURE TOP			FURNITURE BODY. BEECH
UPHOLSTERY (CHAIR & SOFA) T. 373-B			DOOR CURTAIN. 19514

AHTS - INTERIOR COLOUR SCHEME

ROOM NAME			
SENIOR OFFICER'S CABIN			
ITEM & COLOUR	SAMPLE	SAMPLE	ITEM& COLOUR
CEILING PANEL.	1058 STACO		WALL PANEL F 70A STACO
DOOR BLADE			WINDOW CURTAIN
DOOR FRAME & VENTILATOR			FLOORING CARPET. LV 5005 LG
FURNITURE TOP			FURNITURE BODY. BEECH
UPHOLSTERY SOFA & CHAIR. 21218-2			DOOR CURTAIN. T. 336

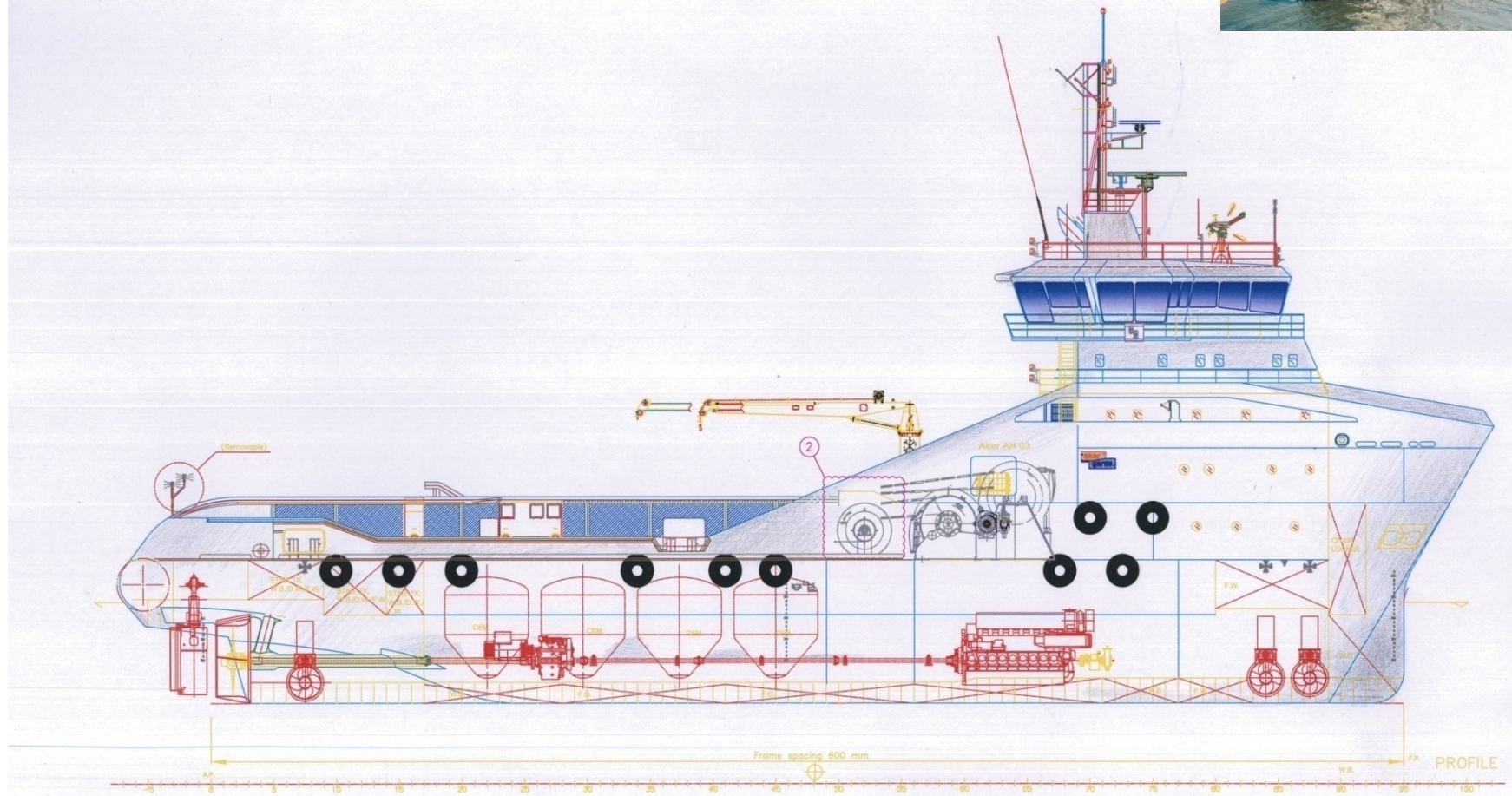


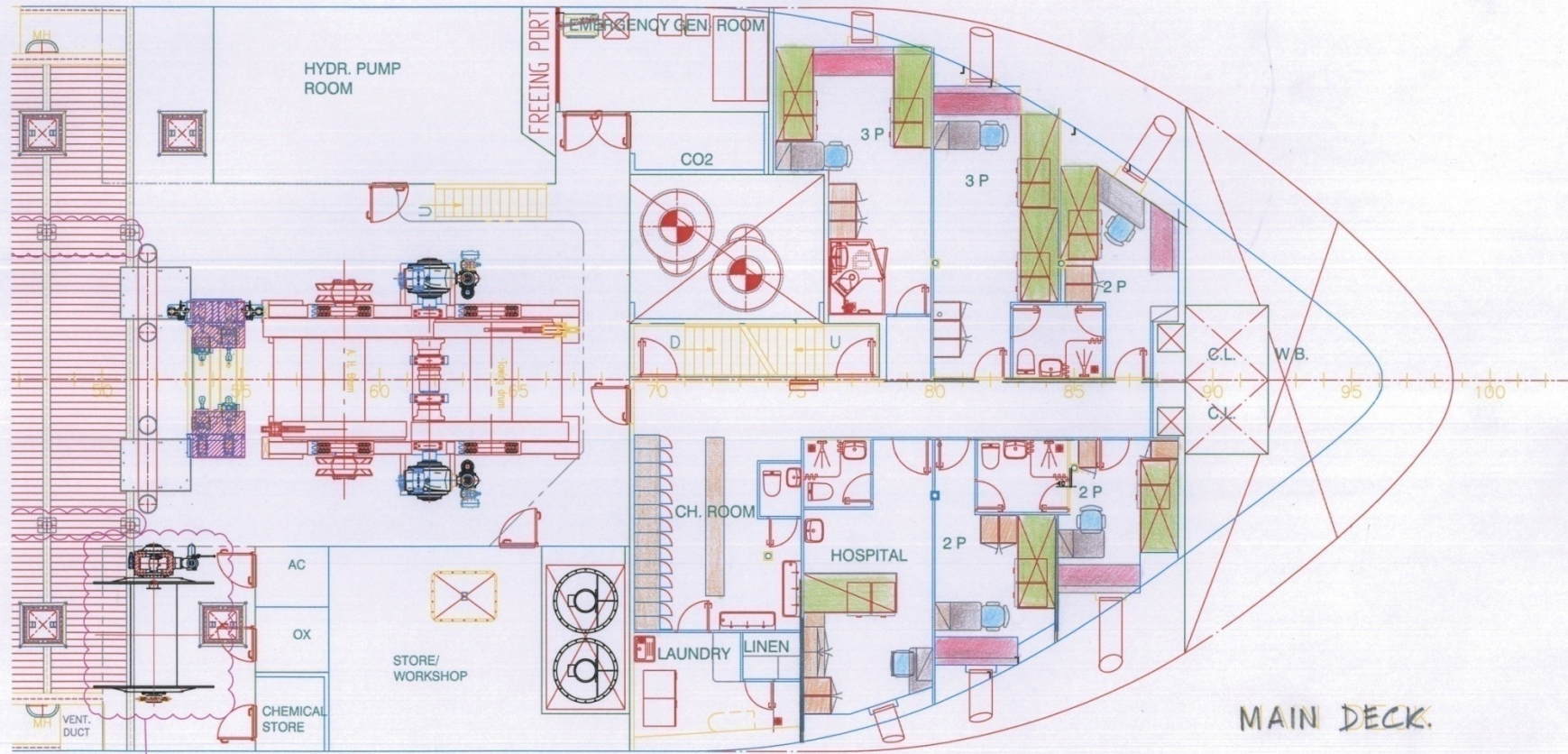




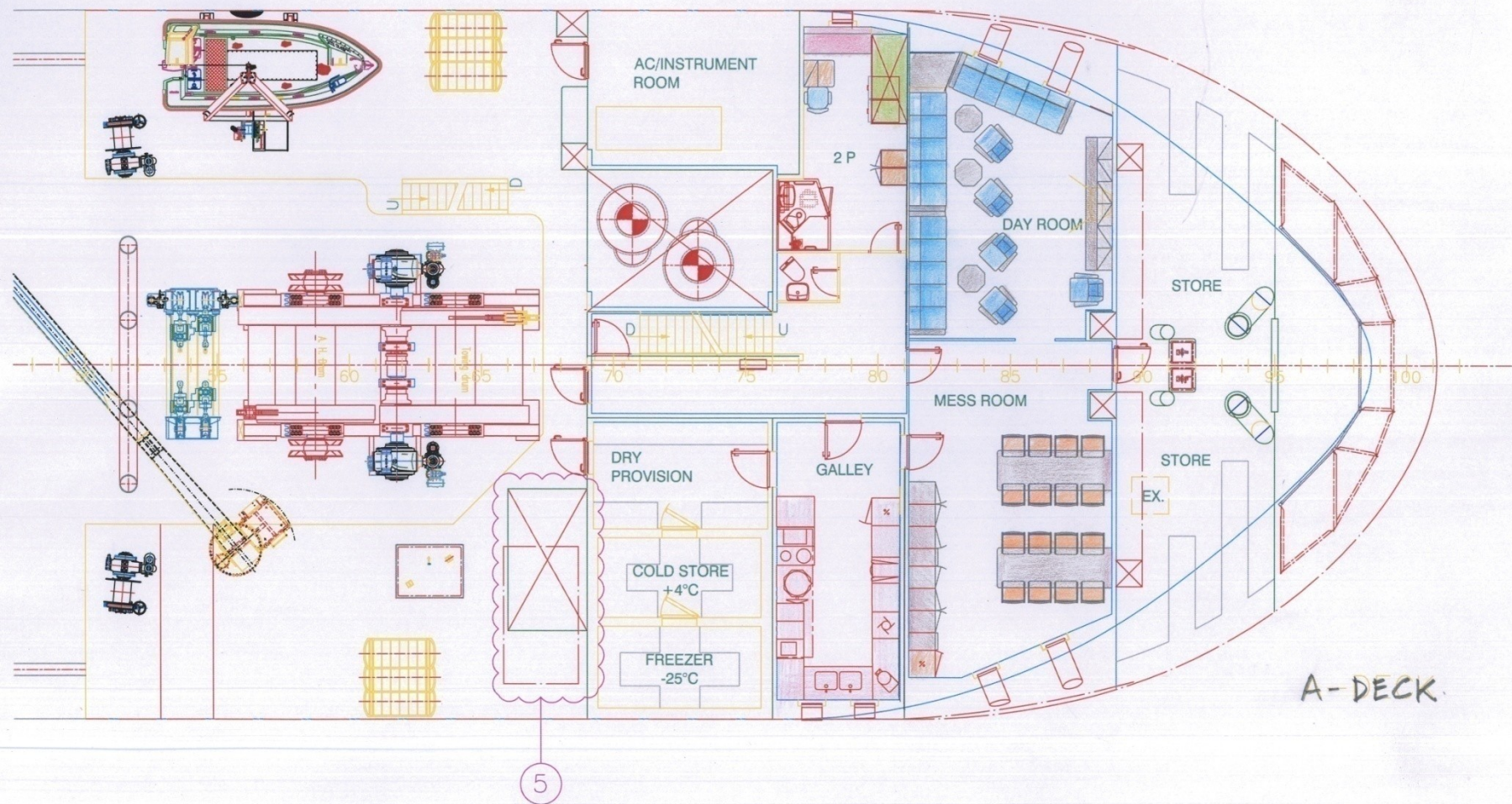
Interior accomodation design for
PSV'S -Platform Service Vessels.

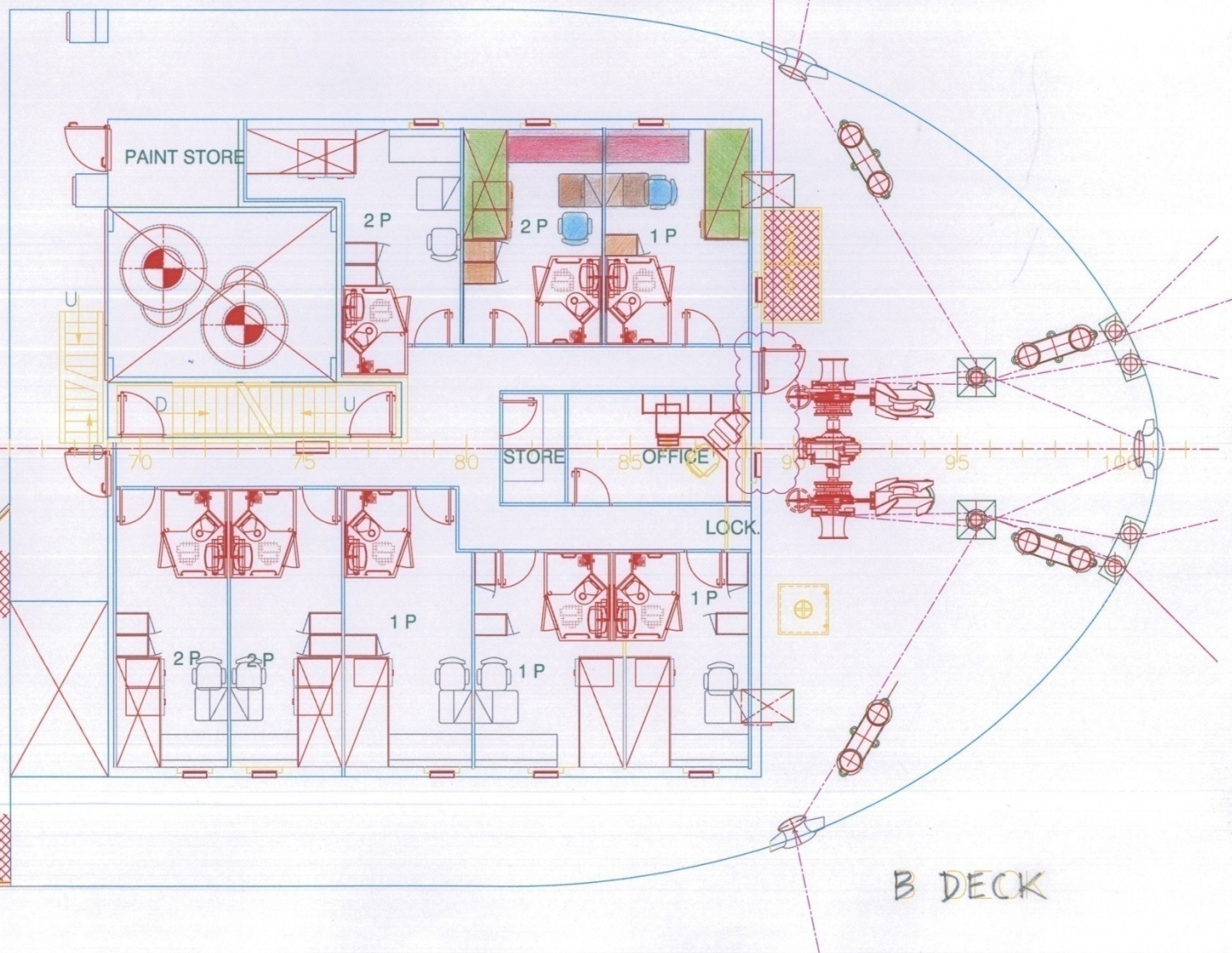
2/22/13

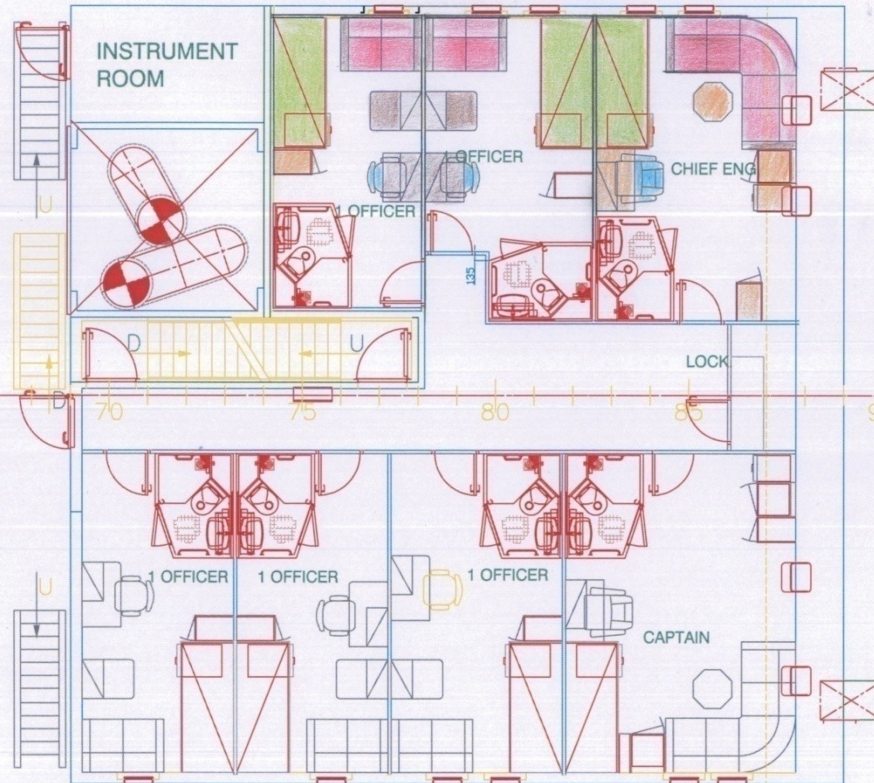




MAIN DECK.







C DECK



2/22/13



2/22/15



2/22/13



ECONOMIC PROSPERITY OF VRV
CORRIDOR.

COASTAL SHIPPING AND
INLAND WATER TRANSPORT
NAVIGATION

DESIGN OF RIVER SEA RO/RO VESSELS.

RO RO VESSELS FOR REGULAR
TRANSPORTATION OF VEHICLES
AND PASSENGERS, PASSENGER
FERRY VESSELS.

TYPE OF GOODS TO BE TRANSPORTED
AND OVER WHAT DISTANCE , WHAT
FREQUENCY?

NEED ANALYSIS

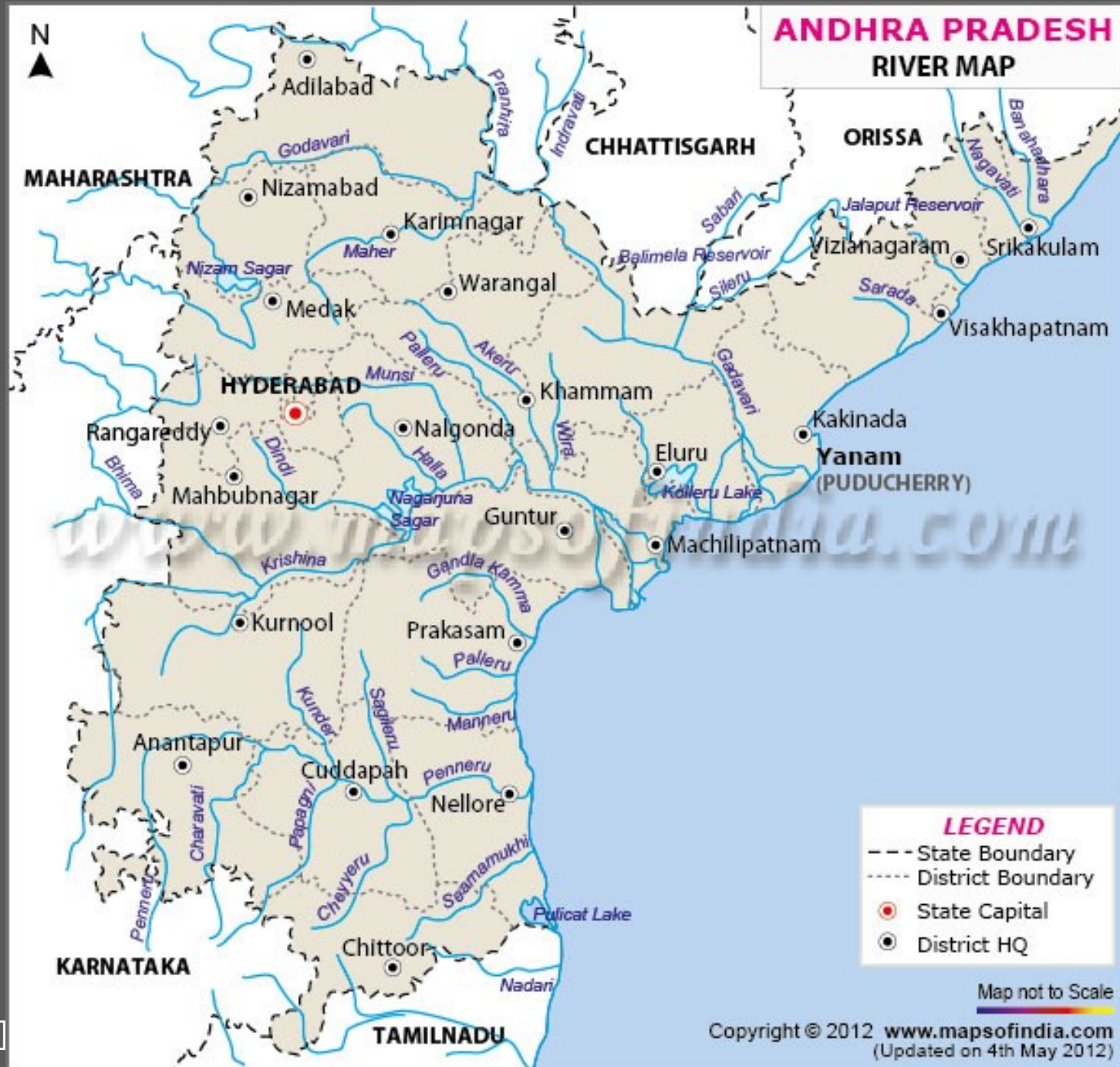
SYSTEMS DESIGN - UNDERSTANDING ALL INTER
RELATED ISSUES

NATURE SYNCHRONOUS
OR
DESIGN WITH NATURE
APPROACH COASTAL ECO
SYSTEM

MANGROVES, WETLANDS
AND CORAL REEFS

SEA STORMS
AND EROSION

ANDHRA PRADESH RIVER MAP





The historical development of water-based transportation is connected to the importance of domestic and international trade.





2/22/13

DESIGN WITH
NATURE

DEFINING THE PROBLEM AREA - THE GOAL/ OBJECTIVE.

IMPROVING COASTAL SHIPPING AND
INLAND WATER TRANSPORT
NAVIGATION

FOR
TRANSPORTATION
OF GOODS
TYPE OF GOODS?

TRANSPORT OF
AUTOMOBILES, TRUCKS

PASSENGER
FERRY
SERVICE
TOURISM &
RECREATION
SPORTS

WATERFRONT HERITAGE SITES

TRADITIONAL BOAT BUILDING SKILLS
GROWTH OF SME'S

MODULAR & ADAPTIVE SHIP
BUILDING ?!

MATERIAL- STEEL, TRADITIONAL WOOD WORKING, FIBRE
GLASS?

2/22/13

Thank you